

# A Day Boarding School





**Beaconhouse Global Presence**  
Providing Quality Education the World Over

# Chief Executive's Message

**Dear Parents and Students,**

Beaconhouse-Newlands is an iconic day boarding school that offers the best of both Beaconhouse and Newlands and opens up a host of opportunities to students. With a long tradition of academic excellence at its core, Beaconhouse-Newlands lays equal emphasis on sports and co-curricular activities. Beaconhouse-Newlands has established four campuses to date which include Beaconhouse-Newlands International School, Kuala Lumpur, Beaconhouse-Newlands Islamabad, Beaconhouse-Newlands Lahore, and Beaconhouse-Newlands Multan.



As an authorised IB World School for the International Baccalaureate Primary Years Programme (IB PYP), Beaconhouse-Newlands is committed to providing high quality and challenging international education to its students. Our students strive to be inquirers, knowledgeable thinkers, communicators and risk-takers that are principled, open-minded, caring, balanced and reflective. At Beaconhouse-Newlands, we believe these attributes can help students become responsible members of the local, national and global communities. I hope that this prospectus will give you an idea of the range of curricular and co-curricular options available at Beaconhouse-Newlands, as well as a glimpse into our vision for a day boarding school poised to be one of Pakistan's most modern centres of learning.

**We look forward to welcoming you to the Beaconhouse-Newlands experience.**

Yours truly,  
Kasim Kasuri  
CEO, Beaconhouse

“How shall one describe the balanced man and woman, considered as an ideal type? He no longer belongs exclusively to a single culture, identifies himself with a single area of the earth, or conceives himself as in possession of an exclusive key to truth. He has friendliness towards people of other cultures and with the habits so engendered goes a lessening of his conceit over what is exclusively indigenous. With respect to his own region he cultivates two rules: first he cultivates every part of it to the utmost, not merely because it is near and dear, but because it can then contribute its specialties to other places and people; and second, when he finds his own region deficient in what is essential to full human growth, he reaches out, to the ends of the earth if need be, to bring into it what is missing.”

**Lewis Mumford**  
The Conduct of Life

# TABLE OF CONTENTS

<b>About Beaconhouse</b>	<b>6</b>
<b>Beaconhouse-Newlands Mission</b>	<b>7</b>
<b>Beaconhouse-Newlands Kuala Lumpur</b>	<b>11</b>
<b>Beaconhouse-Newlands Lahore</b>	<b>12</b>
• Academic Programmes	12
• Life at Beaconhouse-Newlands Lahore	24
• Boarding Life at Beaconhouse-Newlands Lahore	27
<b>Beaconhouse-Newlands Islamabad</b>	<b>29</b>
• Academic Programmes	31
• Life at Beaconhouse-Newlands Islamabad	35
• Boarding Life at Beaconhouse-Newlands Islamabad	36
<b>Beaconhouse-Newlands Multan</b>	<b>37</b>
• Academic Programmes	38
• Life at Beaconhouse-Newlands Multan	39
<b>Salient Features of Beaconhouse-Newlands</b>	<b>41</b>
• Academic Features	41
• Clubs and Societies	43
• Sports at Beaconhouse-Newlands	46
<b>Health and Care</b>	<b>49</b>
<b>Campus Locations</b>	<b>50</b>

# About Beaconhouse

The Beaconhouse School System has risen from its modest beginnings in 1975 as Les Anges Montessori Academy to become a major force in the education world. With an ever-expanding base, already established in the UK, Malaysia, the Philippines, Pakistan, the UAE, Oman, Belgium and Thailand. Beaconhouse is one of the largest private schools in the world.

The Beaconhouse philosophy is epitomised in the liberal and enlightened approach of the extract from 'The Conduct of Life' by Lewis Mumford, the eminent American teacher, humanist and social critic. Beaconhouse values its heritage while it continues to reinvent its educational approach to meet the needs of the future. We believe that modern methods and attitudes can enable students to achieve their fullest potential.

Islamic traditions towards learning are very liberal and are best illustrated by the Holy Prophet's (PBUH) saying, 'Seek knowledge from the cradle to the grave.' The greatest achievements in the Muslim world in the fields of medicine, philosophy, mathematics, arts and literature occurred when the true spirit embodied in the maxim was being followed.

With the world and the needs of the community changing at an ever-increasing rate. Beaconhouse endeavours to be open to change, to adapt, innovate and keep pace with the goals that society expects. At Beaconhouse, our aim and belief is that through hard work and effort, students will be able to step confidently into the real and highly competitive world. We ensure that they are equipped with the ability to make mature and well-informed judgements based on a clear understanding of essential principles, concepts and moral values. This we believe, is the best contribution we can make towards their development as productive members of society and, through them, to the country and the wider world.

# Beaconhouse Newlands Mission

Beaconhouse Newlands Schools are committed to develop international-minded life-long learners who nurture collaboration, value cultural diversity and exercise agency in learning. Beaconhouse Newlands ensures its students are equipped to perform their role as compassionate and responsible global citizens to lead locally and internationally in order to solve the problems of our shared planet, through a multi-dimensional inquiry-based curriculum that transcends boundaries.





# Beaconhouse-Newlands Lahore

Beaconhouse-Newlands Lahore (BNL) was established on September 13, 2011, and takes pride in being the first IB PYP authorised school in the private sector in Lahore and the first in Beaconhouse School System. Also, as the first Newlands school in Pakistan, we create a premier day boarding Newlands experience for our learners, where education is about learning, and creating opportunities for learners to develop their own ideas and letting them stretch their imaginations. We have grown in numbers and in repute over the years, as a school of choice, as our learners pass out to join the practical world as innovators and inventors, ready to meet the challenges of the 21st Century.

As an authorised IB World School for the Primary Years Programme (PYP), BNL offers the IB PYP curriculum framework for students 3-11 years of age. Our middle school programme for students aged 12-14 years includes the best aspects of teaching and learning from different programmes. We offer the CAIE O and A Level programmes as well as IGCSE in the senior school. Our boarding house is located at Bedian where we offer boarding facilities for students in these programmes.

The student-centred approach at BNL means that our students are expected not only to participate actively in class discussions, but also to contribute positively towards their own learning outcomes so that they become partners in the learning process. We develop 21st Century Skills by emphasising logical, analytical and critical thinking – essential tools that will make our students lifelong learners.





# Beaconhouse-Newlands Islamabad

Beaconhouse-Newlands Islamabad (BNI) followed the tremendously successful launch of Beaconhouse-Newlands in Lahore. Both schools draw their inspiration from the original school which was in England, with its equal emphasis on academics, sports, and extracurricular activities.

BNI incorporates the best educational programmes available in the world, including the International Baccalaureate Primary Years Programme (IB PYP), Beaconhouse's own proven Middle Years Programme with a focus on interdisciplinary learning, the Cambridge IGCSE and the International Baccalaureate Diploma Programme (IB DP).

Academics are only one aspect of the BNI experience. Its real strength lies in the diverse range of clubs, sports, and additional activities offered at the school as a result of its extended school day. All students are required to participate in these after-school clubs and sports as these activities are as crucial as academics for our students' development. While participating in the after-school programme, students benefit from state-of-the-art facilities befitting the flagship campus.

Reinforcement classes are held at the school to ensure a thorough understanding of concepts before students go home. The primary purpose is to eliminate the need for after-school academic assistance. Students can also opt for Quran Nazra in school. This extensive programme provides a holistic educational experience that addresses students' intellectual, physical, emotional and spiritual needs.



## Beaconhouse-Newlands Multan

Beaconhouse-Newlands Multan (BNM) launched in September 2016 and offers a blend of opportunities to its students, while focusing on challenging and engaging academic options for students aged 3-12 years. One of the most significant features of this day boarding school is the introduction of extensive co-curricular programme for learning and the diverse range of age-appropriate activities including sports, both during and after school.

The state-of-the-art infrastructure at the campus ensures that students are facilitated at every level. An in-house cafeteria, multi-purpose auditorium, temperature-controlled swimming pool and Library: The Learning Hub, are additional features that promote learning in a world-class environment.

BNM offers an additional foreign language, Nazra Quran lessons and home chores at school to cater to the holistic development of our students. With this extensive programme, BNM aims to provide education of an international standard that supports the intellectual, emotional, spiritual and physical growth and development of the students.

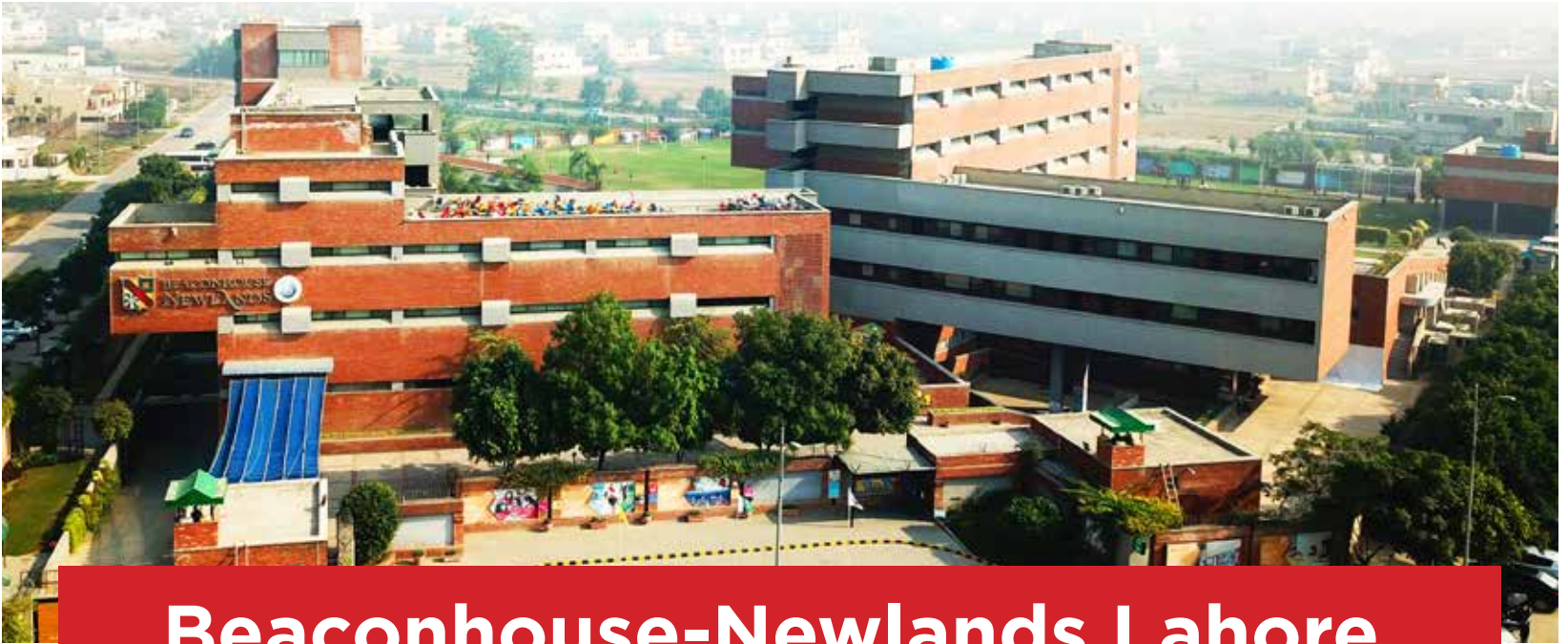


# Beaconhouse-Newlands Kuala Lumpur

Beaconhouse-Newlands Kuala Lumpur (BNKL) witnessed students moving into the new state-of-the-art campus in September 2015. Building on its academic excellence, BNKL offers the Cambridge International Curriculum at Primary, Secondary and IGCSE levels, facilitated by fully equipped classrooms and IT suite. Teachers combine quality teaching practices with the increasingly-available contemporary educational technologies to create a student-centred, flexible and self-paced approach to learning that enables students to participate in projects that stem from their interests and address global issues.

As part of a well-rounded education, the school offers an extensive extracurricular programme which includes a range of clubs and societies, both during and after school. In addition, remedial teaching and “Homework at School” policies not only allow students quality time with their families but also minimise the need for private tuition. An environment of acceptance and encouragement is developed where the ethos is caring and supportive, building on quality relationships between pupils, parents and staff.

Qualified expatriate and local teachers are carefully selected and supported through a continuous professional development programme to help ensure that all students achieve their potential.



# Beaconhouse-Newlands Lahore

## Academic Programmes

### International Baccalaureate Primary Years Programme (IB PYP) (Ages 3-12 years)

The IB PYP is an international curriculum framework designed for students aged 3 to 12 years. Its philosophy is rooted in the concept of international mindedness and that learner's skills and attitudes contribute to future successes and lifelong learning. The PYP aims to develop students' academic, social and emotional well-being by focusing on international-mindedness and strong personal values. It fosters independent learning skills, encouraging every student to take responsibility for their learning.

In the PYP, educators believe that all learners learn by being involved in activities and that all teaching and learning is reflective and results in meaningful action. BNL establishes an active partnership with the student, his or her parents and teachers to create a continuum between learning at school and at home.







## IB at Newlands

Newlands takes pride in introducing varied international curricula, including IB. Newlands moving towards an IB continuum school over the years, is not a sudden change but a natural progression of an IB World school that has very successfully implemented the IB PYP and has grown over the years as a school of choice.

Beaconhouse Newlands Lahore is a Candidate School\* for the IB MYP Programme. This school is pursuing authorization as an IB World School. These are schools that share a common philosophy—a commitment to high quality, challenging, international education that Beaconhouse Newlands Lahore believes is important for our students. Currently IGCSE is a parallel programme that will phase out by 2024.

\*Only schools authorized by the IB Organization can offer any of its four academic programmes: the Primary Years Programme (PYP), the Middle Years Programme (MYP), the Diploma Programme, or the Career-related Programme (CP). Candidate status gives no guarantee that authorization will be granted. For further information about the IB and its programmes, visit <http://www.ibo.org>

## Facilities

1. Boarding  
<https://www.beaconhousenewlands.net/boarding/>
2. Sports Complex  
<https://www.beaconhousenewlands.net/sports-complex/>
3. Auditorium  
<https://www.beaconhousenewlands.net/auditorium/>
4. Gymnasium  
<https://www.beaconhousenewlands.net/gymnasium/>
5. Swimming pool  
<https://www.beaconhousenewlands.net/swimming-pool/>
6. Laboratories  
<https://www.beaconhousenewlands.net/laboratories/>
7. Library  
<https://www.beaconhousenewlands.net/the-learning-tower/>
8. In-School Meals  
<https://www.beaconhousenewlands.net/school-meals/>







## Academic Programmes

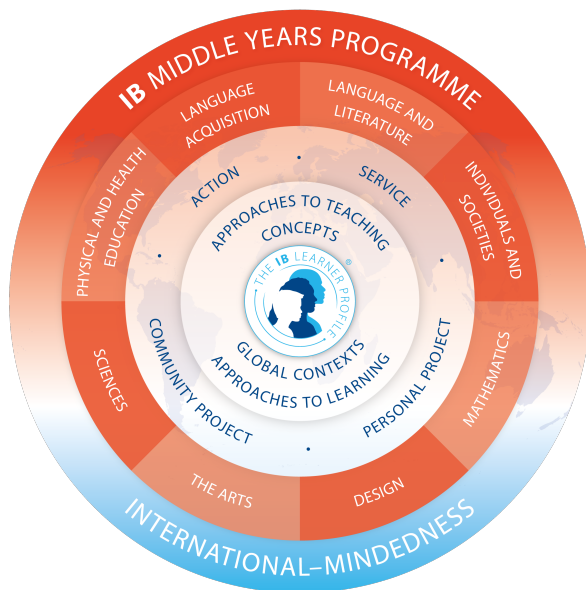
### International Baccalaureate Middle Years Programme (IB MYP) Ages 11 – 16 years

The Middle Years Programme (MYP) is one of the four International Baccalaureate (IB) programmes. MYP is a five-year programme for students aged 11-16. It is equivalent to CAIE O - levels.

The programme allows students to build on their personal strengths and to embrace challenges regarding rigorous curricular areas. The MYP offers students opportunities to develop their potential, to explore their own learning preferences, to take appropriate risks, and to reflect on, and develop a strong sense of personal identity.

The MYP Curriculum framework comprises eight subject groups, providing a broad and balanced education for early adolescents. In the final two years of the programme, carefully defined subject group flexibility allows students to meet local requirements and personal learning goals leading to diverse career paths.

Beaconhouse Newlands Lahore is a Candidate School\* for the IB MYP Programme. This school is pursuing authorization as an IB World School. These are schools that share a common philosophy—a commitment to high quality, challenging, international education that Beaconhouse Newlands Lahore believes is important for our students.



\*Only schools authorized by the IB Organization can offer any of its four academic programmes: the Primary Years Programme (PYP), the Middle Years Programme (MYP), the Diploma Programme, or the Career-related Programme (CP). Candidate status gives no guarantee that authorization will be granted. For further information about the IB and its programmes, visit <http://www.ibo.org>

### MYP Subject Group

Language and Literature: English	<b>Core Subjects</b>  Learners take e-assessments of all 6 subjects in MYP 5	Language Acquisition: Mandarin & Urdu
Mathematics		Science
Individuals and societies		Interdisciplinary Unit
Design	<b>E - Portfolio Subjects</b> Learners submit coursework as e-portfolio for any 1 of the four e-portfolio subjects in MYP 5	Physical and Health Education
Visual Art		Drama

### MYP Projects

Learners conduct individual inquiry while practicing and strengthening their ATL skills to complete a personal project by the end of year 5 which is internally assessed and externally moderated

### CAIE subjects offered to learners enrolled in MYP to meet the local state requirement:

Pakistan Studies    Islamiyat    Nazra

Holistic learning, intercultural awareness and communication inspire teaching and learning in the MYP. They also form the basis of the Learner Profile attributes, which are at the heart of all IB programmes.

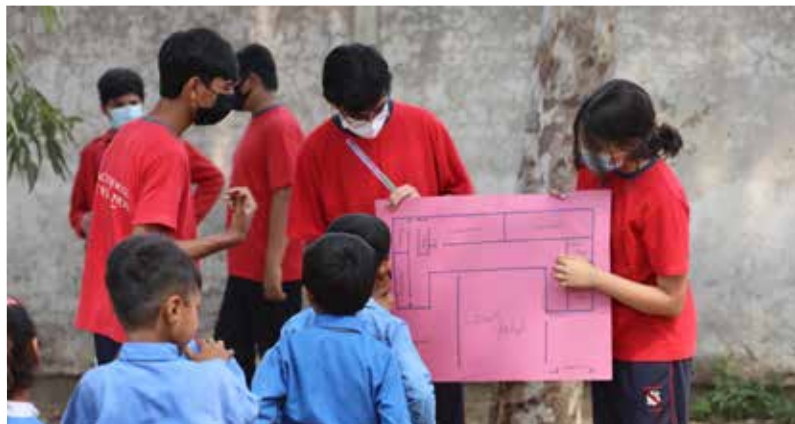
Approaches to teaching and learning, development of international-mindedness and a wide choice of subjects to meet the local and global educational requirements are the key features of the MYP.

In alignment with our vision and direction, the staff at Beaconhouse Newlands Lahore, is committed to enhance their IB professional development, equipping themselves with the pedagogy of the IB programmes in order to create engaging classrooms and overall school environment for our enthusiastic inquirers.

## Service as Action

Beaconhouse Newlands Schools are committed to develop international-minded life-long learners who nurture collaboration, value cultural diversity and exercise agency in learning. Beaconhouse-Newlands ensures its students are equipped to perform their role as compassionate and responsible global citizens to lead locally and internationally in order to solve the problems of our shared planet, through a multi-dimensional inquiry-based curriculum that transcends boundaries.

Service in the MYP stems from the learners understanding of their responsibility towards their community and a connection between classroom learning and their environment at large. Action in the MYP builds upon the action initiated in the PYP and continues as an essential component of the learning process, both as part of the programme's educational philosophy and as a practical outcome of students' learning.



Emergency Evacuation Drill: Learners of (MYP III) BNL with Lehna Singh Public School



Teaching Ecosystems: Learners of (MYP III) BNL to learners of Lehna Singh Public School



Team Building Event: Learners of BNL with Lehna Singh Public School

## Co- Curricular Clubs

Co-curricular Clubs in the MYP at Newlands have initiated from the service as action and learners can choose from any of the following throughout their MYP journey.

Craft and Design	TED Ed	Culinary Art
Scouting	STEAM	Music
Each 1 Teach 1	World's a stage	Adab aur Adaab
Debates	Tech and Design	Social Activism

## International Mindedness

MYP experience at Newlands provides learners with vast opportunities to participate in local and global events to instill international mindedness and provide local contextual learning that is deeply rooted in all the academic and co-curricular experiences.

**2021 - 2022**

34 MYP learners participated in 'Online Sports Coaching' course organized by the International Olympic Committee



Wishing them luck on their endeavour to work for the mental wellness of other teens.

**2021 - 2022**

Two of our enterprising MYP III learners, Samona Ali and Umair Usman Bashir, were selected to represent Pakistan in the Global Education Destinations' Wellness Challenge for Teens programme.



MYP III learners attended face-to-face and virtual Personal Project Exhibitions of various IB schools around the world.



**2021 - 2022**

Hamza Yasir (MYP II) has been selected as the only 10 year old by the Global Soccer Ventures Team to travel to Ireland and play for the St. Patrick's Athletic Football Club (for 16 - 28 year old athletes).

For further information on the following, click the web links:

Beaconhouse Newlands (Lahore) policies  
<https://www.beaconhousenewlands.net/myp-ib-policies/>

MYP Parents' Handbook  
<https://www.beaconhousenewlands.net/middle-years-programme/#single/0>

MYP Personal Project Handbook  
<https://www.beaconhousenewlands.net/wp-content/uploads/2022/03/Student-Handbook.pdf>

### **Cambridge International Curriculum - IGCSE (Ages 14-18 years)**

BNL offers the Cambridge International Curriculum at the O and A levels. Cambridge Assessment International Examinations (CAIE) is the world's largest provider of international education programmes and qualifications. CAIE qualifications are offered in over 160 countries and recognised by universities, education providers and employers across the world.

As subject selection at the Secondary Level is crucial in shaping future career pathways, final approval is dependent upon aptitude and interest.

All Newlanders study either Mandarin or Spanish IGCSE from Class IX, enabling them to establish an advantage in an increasingly competitive global market. Daily tracking of academic progress ensures that all IGCSE students who require it benefit from after-school subject support. Our experienced and highly qualified IGCSE faculty is dedicated to creating a teaching and learning experience that encourages critical thinking and a positive attitude towards learning. This unique learning environment sets Newlands apart from other schools.

#### **Class IX**

Compulsory subjects: English First Language, Mathematics, Urdu, Islamiyat, Pakistan Studies and Mandarin or Spanish.

Optional subjects:

- Pre-Medical

- Pre-Engineering
- Humanities
- Liberal Arts

#### **Classes X-XI**

Compulsory subjects: English, Mathematics, Urdu, Global Perspectives, Islamiyat, Pakistan Studies and Mandarin/Spanish.

Optional subjects:

<b>Group 1</b>
<ul style="list-style-type: none"><li>• Physics</li><li>• Accounting</li><li>• Sociology</li><li>• Food and Nutrition</li></ul>

<b>Group 2</b>
<ul style="list-style-type: none"><li>• Chemistry</li><li>• Business Studies</li><li>• Economics</li><li>• English Literature</li></ul>

<b>Group 3</b>
<ul style="list-style-type: none"><li>• Biology</li><li>• Information &amp; Communication Technology</li><li>• Food and Nutrition</li><li>• Art and Design</li></ul>

**Additional Subjects:** English Literature and Additional Mathematics or any subject from the optional subject list where at least eight students opt for it.

## **O Level (Ages 14-16 years)**

### **Shaping Future Pathways**

The O Level curriculum offered at BNL incorporates the best in international education for learners at this level. Cambridge IGCSE is the world's most popular international curriculum, leading to globally valued qualifications. It is developed in line with changing needs and is regularly updated and extended.

Subject selection at the secondary level is crucial in shaping future pathways. A meeting with career counsellors is held prior to subject selection to ascertain students' aptitude and interest, thus enabling them to make sensible career choices. After school support classes help students get targeted tutoring from their teachers. Special need-based classes are frequently scheduled to support student learning.

Our experienced and qualified O level faculty is dedicated to creating a teaching and learning environment that encourages critical thinking and a positive attitude towards learning. They help every child achieve their potential by making their classroom experiences challenging yet enjoyable. This environment of learning and collaboration sets BNL apart from its competitors and sets the tone for meaningful teaching and learning experiences.

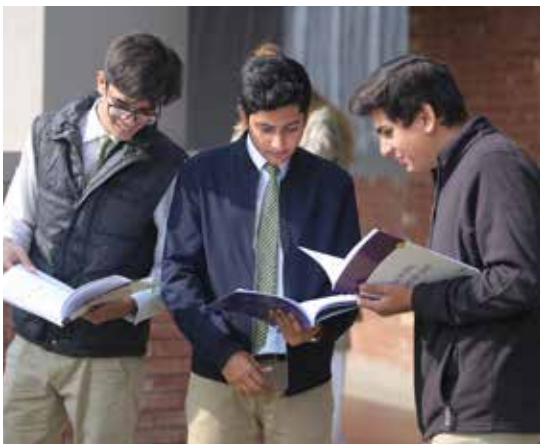


## **A Level (Ages 16+ years)**

A Level represents the culmination of the Beaconhouse-Newlands' educational experience. Admission is a privilege based upon merit and the potential to instil Newlands' core values.

The mission of Beaconhouse-Newlands Lahore A Level is to ensure that our young adults realise their full potential. Progress – both academic and personal – is tracked daily by a caring and supportive staff. Serious study is complemented by opportunities for students to develop life skills and leadership qualities through an array of co-curricular activities, framed by the Active and Creative Engagement (ACE) Core. This enables holistic profile development for all our College Programme students.

A Level students are guided on their subject selection by our Career Advisor through the Access Centre, established to facilitate our students in deciding their career path and gaining admission to the university of their choice. All students benefit from additional one-to-one support, at no extra cost, from faculty and staff, who are committed to supporting our students in their journey towards higher education and a fulfilling, successful professional life.



Subjects offered at Beaconhouse-Newlands Lahore:

Subjects	Requirements
<b>Sciences</b>	
Biology	BB in two science subjects including Biology, B in English and Mathematics at O Level/IGCSE
Chemistry	BB in two science subjects including Chemistry, B in English and Mathematics at O Level/IGCSE
Physics	BB in two science subjects including Physics, B in English and Mathematics at O Level/IGCSE
<b>Mathematics</b>	
Mathematics	BB in two science subjects including Mathematics at O Level/IGCSE
Further Mathematics	BBB, in three science subjects including B in Mathematics at O Level/IGCSE
<b>Humanities</b>	
Sociology	CCC and Minimum B in English at O Level/IGCSE
Economics	B in English and C in Mathematics at O Level/IGCSE
Law	CCC and B in English at O Level/IGCSE
Psychology	B in English at O Level/IGCSE
<b>Creative &amp; Professional</b>	
Accounting	BB in two subjects including Mathematics at O Level/IGCSE
Business	CCC and B in English at O Level/IGCSE
Information Technology	CCC and B in Computer Sciences/IT at O Level/IGCSE
Computer Sciences	CCC and B in Computer Sciences/IT at O Level/IGCSE
Art & Design	CCC and B in Art at O Level/IGCSE
Media Studies	CCC and B in English at O Level/IGCSE
<b>Language &amp; Literature</b>	
English Language	CCC and minimum B in English at O Level/IGCSE
Urdu Language	CCC in any three subjects at O Level/IGCSE

# Life at Beaconhouse-Newlands Lahore

## Co-curricular Clubs

The clubs programme at BNL is designed to provide each student with holistic education and to foster the qualities of the ideal learner. Each club is conducted by an expert, passionate coach and introduces hands-on learning and the spirit of collaboration and competition.



## Co-curricular Sports

We offer the following sports and activities to our students on campus: Football, Cricket, Basketball, Athletics, Volleyball, Badminton, Swimming, Gymnastics, Table Tennis, Skateboarding, Rugby, Archery, Golf and Taekwondo. Clubs and societies exclusive to BNL provide students with a holistic learning experience.



## Primary Years Programme (PYP)

Over the course of one academic year, we offer our students in the PYP programme four different skill sets. We give our students the chance to try out a range of skills before they decide the best fit for them.



## Middle and Senior School Programme

The Middle and Senior programme is designed so that our students are exposed to a diverse skill set and are ready to select the right fit for them. In addition, we have incorporated goals into the programme in order to encourage our students to drive the curriculum.





# Options available to students

## For PYP Students

1. Public Speaking – Introduces our students to various forms of public speaking that are both appropriate and advanced for their age groups. Our students cover a wide variety of public speaking techniques.

2. Woodwork Shop – Here students will find inspiration and complete woodworking plans for projects, ranging from simple clamp to smart-router table designs. From small and simple shop solutions to dream tool cabinets, they will take part in just the right projects for improving their skills, increasing efficiency and making their time here more enjoyable.

3. Puppetry - Our students will learn the art of operating puppets, typically either by strings controlled from above or by hand.

4. Knitting and Sewing – This club introduces our little learners the art of using needles for stitching and sewing while also teaching them how to use needles safely. Not only will this expand students’ creativity, but also teach them discipline and patience.

5. Little Chefs - Our students will develop their own recipe books, learn table etiquette and assist a professional chef in the kitchen.

6. Dexter’s Lab - Our students get a head start on applied sciences by doing lab experiments and learning how things work in a fun and creative way.

7. Gardening - Our students will develop an organic pathway where they will grow vegetables and plants, learn do-it-yourself activities that can be adopted to beautify any garden.

8. Sur Taal/Music – Our students will apply what they learn in their regular music lessons by adopting various forms of singing and understanding basic rhythm and beats.

9. Book Worms – Encourages our young learners to develop a habit of reading early on in life. In addition, students engage in discussions about books they enjoy or books they would like to read.

10. Digital Storytelling – Our students learn the art of developing creative stories in an oral medium and the requisite technologies for translating them into an audio form.

11. Math and Mind Games - Introduces our young learners to the basics of logical thinking by introducing them to puzzles and games that help enhance their mental math and reasoning abilities.

## For All Age-Groups

12. Rhythmic - Introduces our students to the world of yoga and aerobics. Our students learn to practise Zumba and other healthy activities that encourage an active lifestyle.

13. TED-Ed Club - The TED-Ed club is an off-shoot of the worldwide famous TED talks. It gives the students a platform to work on their public speaking skills by using the educational material provided by the TED organisation itself.

14. Scouting - This club aims to support our students in their physical, mental and spiritual development, so that they may play constructive roles in society. Activities will have a strong focus on the outdoors and survival skills.

15. Self-defence - Our students will learn counter-measures that involve defending the health and well-being of oneself from harm. Physical self-defence will enable our students to be able to physically counter an immediate threat of violence.

16. Environmental Club - This club is dedicated to environmental issues. It campaigns for the improvement of the environment through activities such as planting trees, beautifying the campus and recycling in schools.

17. Orators' Den - Introduces our students to various forms of public speaking that are both appropriate and advanced for their age groups. Our students cover a wide variety of public speaking techniques such as improvisation, declamations, MUNs and parliamentary style debates.

18. Arts and Crafts - Our students go beyond their regular art curriculum to explore various forms of crafts and 3-Dimensional art forms.

### **For Middle and Secondary School Students**

19. Creativity Unleashed - A place where our students find some inspiration and show off their own creativity in terms of arts and crafts. Two separate areas are offered, one includes basic fine arts while the other offers pottery and miniature painting.

20. Media Club - The Media Club engages students who exhibit interest and talent in photography, filming and handling PA (public address) equipment. Students are given the opportunity to develop their skills through training programs such as video editing, short-film projects, photography courses, exhibitions, field trips and competitions.

21. General Knowledge - Culturally valued knowledge is communicated by a range of professionals to our students. It helps to enhance the personality, intelligence and creativity.

22. Rescue 239 - Our resident emergency medical services club teaches our students how to administer first aid and the basic trauma response required in the event of an emergency.

23. World's a Stage - Our students discover their ability to become performers both on stage and in their personal lives by learning confidence-building and acting techniques.

24. Tech and Design - We are living and learning in a technology-rich world. Our tech and design club introduces our students to basic programming, game

development, robotics, digital media and video editing techniques.

25. Each One Teach One - Our students get the opportunity to give back to the less privileged members of the Newlands community by educating our junior staff. Students become teachers and help the junior staff with language competency and to complete their basic matriculation degrees.

26. BNL Magnates - Our resident entrepreneurial club offers our students the ability to apply the concepts of business in real life by developing a business plan and setting up their own small enterprise within the school (For senior students only).





# Boarding Life at Beaconhouse-Newlands Lahore

BNL Boarding started in 2011 with 76 male and female O and A Level boarders. The boys' boarding at Bedian has a total capacity of 100 boarders. Boarding for girls, located in DHA Phase 6, has 15 limited seats.

BNL boarding is a home away from home. As a rule, boarders follow a highly-structured day in which classes, meals, athletics, study times, activities and free time are predetermined for them. Residential life is a unique component of the boarding school experience. Being away from home and learning to cope helps develop confidence and independence when the right care and environment is provided for them.

## Salient Features of BNL Boarding

### Academics

In order to support students' academic performance, we ensure the following:

- frequent visits by our Housemaster and Assistant

Housemasters to the school to meet the teachers

- if parents are unable to attend the Parent-Teacher Conferences or other meetings, one member of the house staff will meet the teachers to discuss the student's progress

- parents are informed and kept up-to-date about the child's curricular and extracurricular activities
- a complete academic record is kept in the boarder's file, which helps in the analysis of their results

- daily supervised study times are observed so that each student has ample opportunities to complete his or her homework. If necessary, additional time will also be provided, such as during exam times

- computers are available for research purposes

## Sports Complex

BNL provides the Bedian Sports Complex for all our students, which is suitable for different sports including: Horse Riding, Football, Cricket, Basketball, Volleyball, Athletics (track), Tennis, Handball and Swimming. Coaches are present to train boarders and help them excel in their chosen sports.

## Development

Along with the academic aspect, the student's personal development is a vital aspect of BNL boarding. We have boarders from all parts of the country and even abroad, with different cultures, values and family backgrounds. This exposure to a diversity of backgrounds among their friends provides students with the opportunity to grow into confident and tolerant adults. We pay particular attention to the following behaviours of our students:

- Table manners
- Conversation
- Language
- Discipline
- Behaviour
- Time management
- Dress

## Accommodation

- our facility is linked to the electricity supply and we also have generators to guarantee 24/7 uninterrupted power supply
- all student rooms are provided with convertible air-conditioning which can also heat rooms when needed
- our own maintenance team is available to respond quickly in case of any malfunction

## Meals

A team of well-trained chefs is employed to provide the best meals to our students. Although it is impossible to cater to individual tastes, the variety

of food and the students' input in the menu ensure that our boarders experience many delicious meals as part of a balanced diet.

## Transport

Dedicated air-conditioned transport is used to take students from the boarding facility to school and back, in addition to fortnightly visits to commercial centres on weekends.

## Entertainment

BNL boarding is equipped with Wi-Fi facility. The common rooms have LED TVs with cable network, as well as CD /DVD players to entertain boarders in their leisure time.

## Medical

For emergency care and first-aid, a nursing assistant is available 24/7 at the infirmary.

## Safety & Security

The boarders' safety and security is the top priority of BNL boarding. During town trips, boarders are accompanied by armed guards. At the gates of the school and the boarding house, all students, staff and visitors have to identify themselves through rigorous security-checks.





## Beaconhouse-Newlands Islamabad

As an authorised IB World School for the Diploma Programme (DP) and for the Primary Years Programme (PYP), Beaconhouse-Newlands Islamabad (BNI) inquiry remains at the heart of all learning that takes place here, whether that leads to the IB DP or the IGCSE.

We maintain an interdisciplinary approach throughout, keeping an emphasis on project-based learning that allows students to connect conceptual understanding with real-life applications. Using a real-world problem, our students show what they learn as they journey through an educational unit, interact with its lessons and collaborate with each other. Our IB-trained faculty are equipped with pedagogical expertise to support contemporary educational approaches – for them, 21st Century Skills and lifelong learners are not just catchphrases but the very premise of their teaching.

Learning takes place both within and outside the classroom. Indoor learning spaces at Beaconhouse-Newlands are climate-controlled and technology-enabled, allowing the use of 21st Century tools to support research, creativity and presentations at all levels. There is even a Reggio Emilia-inspired crèche for 3-month to 3-year-olds, which gives them room to explore their environment and learn through experiences of touching, moving, listening, and observing, with active involvement by parents and trained staff.

Our sprawling campus is designed to meet all the needs of modern-day education, providing comfort, security, and the perfect environment to support intellectual, emotional and physical development. BNI has a state-of-the-art sports complex with a half Olympic-size swimming pool, squash courts and two basketball courts; including a multipurpose hall that can be used for aerobics, Taekwondo, gymnastics and more. Two football grounds provide additional space to develop physical strength and agility.

Beaconhouse-Newlands places equal emphasis on academics, sports, and co-curricular activities, with a wide range of clubs and societies for students to explore their interests and hone their skills.

There are times when parents are required to work late, or, in some cases, travel out of the city or country for an extended period of time. Making arrangements that don't disrupt children's schooling can be complicated. Beaconhouse-Newlands is a day boarding school, which means an extended school day gives ample time for students to participate in sports and activities, as well as get additional reinforcement lessons in areas that need attention. Boarding facilities for children above 12 years mean that neither studies, nor friendships are disrupted if parents are away.

We believe that Beaconhouse-Newlands Islamabad is a place where acceptance, care and support build strong relationships between students, parents and staff. Our students are facilitated in the endeavour to become responsible global citizens who are aware of their role as members of the community and aspire to create meaningful change. The attributes of an IB learner - inquiry, knowledge, thought, communication, principles, open-mindedness, care, risk-taking, balance and reflection - inform the school's approach at all levels.



# Academic Programmes

## Busy Bodies

At BNI we understand how important choosing an Early Years setting is in creating a strong foundation for your child. We consider the individual needs, interests, and stages of development of each child and use this information to plan challenging and enjoyable experiences for them, throughout all areas of learning and development. We believe in fostering the individuality and uniqueness of each child; therefore, each area of learning and development is implemented through planned, purposeful play and a mix of adult-led and child-initiated activity based on the Reggio Emilia approach. It is a pedagogy that is child-centred and delivered through the constructivist approach. Community spirit is a vital part of our system as it helps children cultivate nurturing relationships and develop into responsible citizens. To encourage healthy social interactive behaviour, we stress upon active learning and outdoor play.

Our practitioners respond to each child's emerging needs and interests, guiding their development through warm and positive interaction. In planning and guiding children's activities, practitioners observe the different ways that children learn and reflect these in their practice.

## International Baccalaureate Primary Years Programme (IB PYP)

At BNI our IB Primary Years Programme (PYP) is for children aged 3 – 12 years. It nurtures and develops young students as caring individuals who display the IB Learner Profile.

We challenge students to develop critical thinking and problem-solving skills through our Programme of Inquiry. Students explore global and local issues and apply the concepts, knowledge and skills learnt in real-life contexts.

We consider the school, our students and parents to

be partners in the learning journey. The whole school community actively participates in encouraging our students to be self-motivated lifelong learners.

The PYP\* is guided by six transdisciplinary themes of global significance; students deepen their learning by developing their conceptual understandings; strengthening their knowledge and skills across and beyond subject areas.

It's a curriculum framework of essential elements – the knowledge, concepts, skills, attitudes, and action that young students need to equip for successful lives, both now and in the future. We work with the five elements to construct a rigorous and challenging primary curriculum for international education.

The PYP is organised according to:

- the written curriculum, which explains what PYP students will learn
- the taught curriculum, which sets out how educators teach the PYP
- the assessed curriculum, which details the principles and practice of effective assessment in the PYP

\*Information resourced from: <http://ibo.org/programmes/primary-years-programme/>

## Middle Years Project-Based Learning (PBL)

BNI offers PBL to the Middle Years as an alternate to the IB program. One reason for this is that PBL and the IB share the same philosophy and have common objectives.

Project-based learning (PBL) is a way of teaching, widely adopted in diverse fields and educational contexts to promote critical thinking and problem-solving in authentic learning situations. In PBL, the students are given a real life problem and they take anywhere from 4-8 weeks to solve it. In order to arrive at a few viable solutions, they have to learn a significant amount of content. The content is interdisciplinary, meaning there is multi-subject integration. This approach has been tried and tested for years and research has proven that the students who learn via PBL, learn more, retain

the information longer and most importantly, end up learning 21st Century Skills like collaboration, creativity, communication and research, which are very important to develop a well-rounded individual.

## IGCSE

Beaconhouse-Newlands offers the world-renowned and recognised Cambridge IGCSE international qualification, addressing the academic needs of students aged 14 to 16 years. Cambridge IGCSE provides a broad and flexible study programme covering subjects from a variety of fields. It improves performance by developing the key skills of creative thinking, enquiry and problem-solving. The syllabus and its delivery help in developing attributes of lifelong learning by promoting inquiry, commitment and cooperation. At BNI, our students are required to study nine subjects and we offer a wide variety to choose from.

Group 1 Compulsory subjects	Group 2 Optional subject combinations
Mathematics	Physics or Economics
English as first language	Chemistry, Computer Science or Art & Design
Urdu as second language	Biology or Business Studies
Islamiyat	Global Perspectives or English Literature
Pakistan Studies	





## International Baccalaureate Diploma Programme (IB DP)

The **DP curriculum** is made up of three mandatory core components – a theory of knowledge (TOK) course, an extended essay (EE) based on independent research, and participation in creativity, action, service (CAS) – along with six subject groups.

**Theory of Knowledge (TOK)** is a mandatory part of the IB Diploma Programme core that requires students to reflect on the nature of knowledge to understand how we know what we claim to know.

The TOK course takes up 100 teaching hours over the period of two years. It is assessed through an oral presentation and a 1,600 word essay. The presentation is based on the application of TOK thinking to a real-life situation while the essay encompasses conceptual elements.

The **Extended Essay (EE)** is another component of the IB Diploma Programme core that is mandatory. The students are required to submit a 4,000 word

paper based on an independent, self-directed piece of research.

Students may choose to either investigate a topic of special interest to them, also related to their six DP subjects, or they may undertake an essay in world studies where they carry out an in-depth interdisciplinary study of an issue that has global significance.

**Creativity, Activity, Service (CAS)** is another one of the three mandatory core elements of the IB Diploma Programme. Students are required to be involved in a range of activities alongside their academic studies involving creativity, sports and community service.

CAS is not formally assessed but students reflect upon their experiences as a part of the DP curriculum providing evidence of the CAS learning outcomes.

Over the course of the two-year IB Diploma Programme, students are required to successfully complete all three DP core components and study six subjects chosen from the six subject groups:

Group 1 Studies in Language and Literature	Group 2 Language Acquisition	Group 3 Individuals and Societies	Group 4 Sciences	Group 5 Mathematics	Group 6 The Arts
English SL/ HL	French ab initio SL	Business Management SL/ HL	Biology SL/ HL	Mathematics A&I SL/ HL	Visual Arts SL/ HL
Urdu SL/ HL		Psychology SL/ HL	Chemistry SL/ HL	Mathematics A&A SL/HL	
		Information Technology in a Global Society SL/ HL	Physics SL/ HL		

Generally, students are required to choose one course from each subject group. However, there are other possible streams:

- a Bilingual Diploma can be done in which students opt for 2 languages from Group 1.
- medical students may opt for three sciences from Group 4.
- students also have the choice to study an additional sciences, individuals and societies, or languages course, instead of a course in the arts.

Subjects are offered at higher level (HL) and standard level (SL). Although the HL and SL courses differ in scope, they are measured according to the same grade descriptors.

Each student is required to opt for three subjects at higher level, and three at standard level. SL subjects take up 150 teaching hours over the two-year programme while HL subject take up 240 teaching hours.



# Life at Beaconhouse-Newlands Islamabad

## **Community Service:**

In order to develop empathy in our leaders of tomorrow to meaningfully contribute to the world, community service is a major part of the BNI philosophy. Starting from within the school leading up to the local community, the students regularly come up with initiatives to deal with issues and further improve on conditions of their communities. We believe that service-learning experiences are most effective when students are working towards actual needs of the society.

## **Special Education Needs Coordinator:**

In keeping with the inclusive ethos, the Special Education Needs Coordinator (SENCO) implements a whole school approach to provide educational assistance to children with mental, psychological, behavioural and learning difficulties. Our SENCO is responsible for arranging and coordinating extra help for students with such needs.

## **Reading Specialist:**

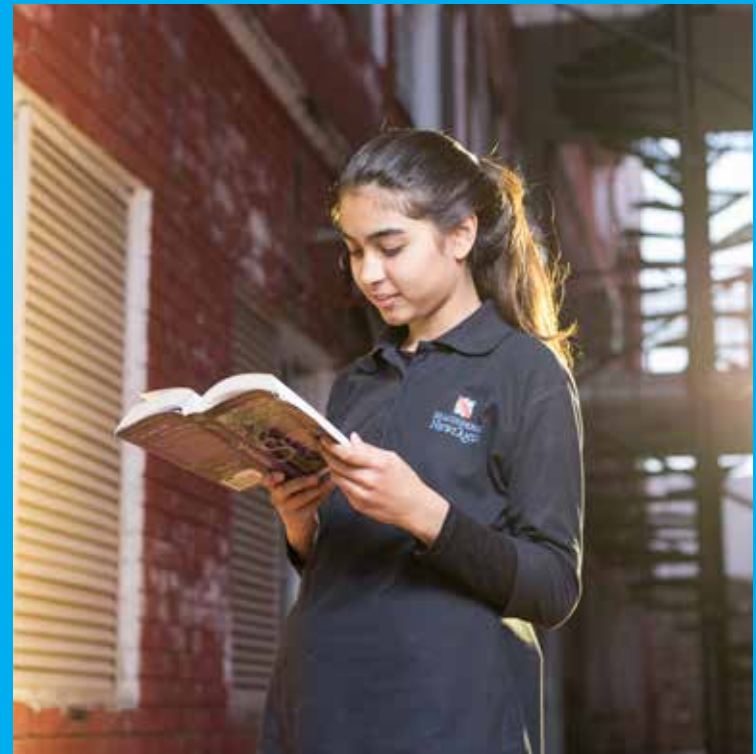
The reading specialist at BNI takes the role of a librarian to a whole new level. We make sure the library is a safe and happy place for all students. It takes knowing each and every student at a personal level so that the appropriate book can be recommended. We believe every student can become a great reader if you address their interests and passions. Moreover, one-on-one reading sessions help those with reading difficulties; a great effort is made to improve reading skills across the board. Story telling sessions are a great way to inculcate the love of reading in our younger students. The BNI library is well stocked to cater to the diverse needs of each and every student. The library supplements our curriculum and the students' learning.

## **PSHE:**

Personal, Social and Health Education (PSHE) is incorporated into the program to help children develop fully as members of the community. Through PSHE, students develop the knowledge, skills and attributes they need to keep themselves healthy and safe within and outside of school.

## **Transport:**

We offer a reliable, far-reaching transport for the school which is used by the majority of our students. Since our campus is in the outskirts of the city, parents like to opt for this service. There is an armed guard and a maid on every bus to meet strict security measures.



# Boarding Life at Beaconhouse-Newlands Islamabad

Our boarding facility is a welcoming place for children where they are made to feel at home at all times. They develop relationships which are conducive to learning. The boarding is well-equipped and spacious; ensuring that children are vigilantly monitored and looked after well. Weekly excursions are a regular weekend feature and a Quran teacher is arranged for during the week. Our boarding community is a close-knit group of children who build onto each other's strengths and provide support along the way.

Beaconhouse-Newlands Islamabad is equipped with state-of-the-art security equipment and infrastructure to ensure our students' safety. We have 100 plus Closed-Circuit TV cameras installed in and around campus. The school also has highly-trained security guards as well as an experienced security supervisor. Please visit our admissions office for more information about the security arrangements at the campus.





# Beaconhouse-Newlands Multan

Located in the heart of the city and spread over an area of 46,282 square feet, Beaconhouse- Newlands Multan (BNM) has evolved into a safe and friendly institution where students, teachers and parents join forces to provide the best opportunities to educate our future generations.

BNM offers an environment conducive to learning that provides intellectual, social, emotional and moral development of the students. This philosophy is reflected in our mission statement, for Beaconhouse is a community of lifelong learners.

BNM offers an inquiry-based approach to education for students aged 3 to 12 years. We aim to introduce a complete plan to maintain learning practices in and outside of school to encourage an active participation of students in the research process that they could ultimately apply in real-life situations.

Owing to the holistic approach to education, we provide a stimulating co-and extracurricular programme congruent to the syllabi taught in the classroom. As a result, students enjoy an educational experience that helps them mature both physically and spiritually; helps in character building and aids aesthetic development. Besides, clarity in language and personality are important products of BNM's educational endeavours.

BNM is the pioneer of International Baccalaureate Programme in Multan. The school has successfully gained the status of a Candidate School for IB-PYP and is making steady progress towards achieving PYP authorisation.

## Academic Programmes

### International Baccalaureate Primary Years Programme (IB PYP)

The PYP is an international educational framework for teaching and learning. Its philosophy is rooted in the concept of international-mindedness and that learner's skills and attitudes contribute to future successes and lifelong learning. PYP teachers cover the necessary content but also focus on creating mind-sets and an environment that is conducive to learning, growing and enjoyable school experiences.

In the PYP, educators believe that all learners learn by being involved in activities and that all teaching and learning is reflective and results in meaningful action. BNM establishes an active partnership with the student, his or her parents and teachers to create a continuum between learning at school and at home.

The attributes of the Learner Profile are an important part of building this environment and the essential elements of knowledge, concepts, skills, attitude and action help learners achieve their goals.

### International Baccalaureate Middle Years Programme (IB MYP)

The Middle Years Programme (MYP) is one of four International Baccalaureate (IB) programmes offered. It is designed as a five-year programme for students aged 11-16. It is equivalent to O Level GCE or IGCSE.

The MYP requires at least 50 hours of teaching time for each subject group, in each year of the programme. In the final two years of the programme, carefully-defined subject group flexibility allows students to meet local requirements and personal learning goals.

It offers a wider range of subjects and a blend of sciences and humanities, which makes for a more rounded education and better options at the university level instead of opting for specialized subjects at O Level.

The MYP requires at least 50 hours of teaching time for each subject group, in each year of the programme. In the final two years of the programme, carefully-defined subject group flexibility allows students to meet local requirements and personal learning goals.



# Life at Beaconhouse Newlands Multan

## School Meals

We offer healthy and hygienic meals that are served to our student body. The menus are carefully selected, keeping in view the nutritional needs of growing children and are designed to promote healthy eating habits.

Children gather daily in the cafeteria for their lunch. This provision adds to their social development through interaction outside the classroom and also fosters healthy eating habits, self-service and table manners, which are yet another aspect of personal development embedded in our culture.

## Inclusive Education

We, at BNM, believe that all learners have unique needs to consider when helping them to meet or exceed their academic and non-academic potential. To provide access to the IB program in our school, we endeavour to apply approaches and support systems that address the individual needs and varied learning styles of students, including those identified with special needs (special education, gifted and talented) so that they can be fully integrated within mainstream classes.

Students with Special Education Needs (SEN) are entertained only with an assessment report from a certified psychologist/psychiatrist. All these students are subsequently assessed and the data collected provides a profile of the students and helps to diagnose their particular needs. With the help of this information, the relevant stakeholders work collaboratively with the curriculum coordinator to determine what strategies can be implemented to best address each student's individual needs. The databank includes anecdotal and test results, which are used to support the planning of literacy learning for those students. Relevant information is routinely disseminated to classroom teachers, the

curriculum coordinator, SEN resource teacher, the parents and the psychologist/therapist involved in the literacy learning of the student. Regular meetings and case conferences are held with the IB head, programme coordinator, homeroom/subject teachers, parents and others in order to address the specific needs of the identified students.

At BNM, each special needs student is provided with an Individualized Education Plan (IEP) that is tailored to the child's individual needs: both behavioural and academic. Special students may require an SNA (Special Needs Assistant) who focuses on only one student, assisting him or her in covering the IEP objectives while simultaneously fostering appropriate classroom behaviour. Parents are provided with a regular report about their child's progress. The special needs coordinator assesses the student and accordingly decides how our team can support the student in progressing and making the best use of their talents.

## Multipurpose Auditorium

The multipurpose auditorium is a special feature of BNM. Students use it for performing arts and indoor sports activities such as athletics, gymnastics, aerobics and martial arts. We strive to provide a space for students that is highly functional, easy-to-use and satisfying for performers and audience.







# Salient Features of Beaconhouse Newlands

## Academic Features

### Access Centre (available at BNL and BNI)

The Access Centre at Beaconhouse-Newlands facilitates students in selecting both, their career and gaining admission in universities, of their choice.

Centrally located, the Access Centre is operational five days a week with an open door policy at all times. Our trained advisors at Newlands provide comprehensive support to students in developing an academic and extracurricular profile, leading up to the application processes of local and foreign universities for summer school placements and university admissions. When applying to colleges or universities, the Access Centre provides assistance with the paperwork required to apply for visas, financial aid, personal essays or scholarships. Students are informed about opportunities and prepared for tests required for university admission. The Access Centre also organises the Dynamic Speaker Series in which experts in various fields share their experiences to help students learn about a range of career paths.

The Access Centre focuses on the following questions:

- Who are you and who would you like to become?
- Where do you see yourself in 10 years' time?
- Where do you want to continue your education?
- What do you want to study?

All of the above questions are explored through university visits, fairs, Skype sessions and individual sessions. The Access Centre enables you to consider your options

globally as well as those available locally. The Access Centre opens doors to your future so that with family support, students may make informed decisions. Currently, our alumni are studying at renowned institutes in the US, the UK, Germany, Canada and Pakistan.

The Access Centre encourages students to get out of their comfort zone and explore new boundaries, both at home and overseas. Let The Access Centre be your stepping stone to your next destination.

### Auditorium/Amphitheatre (available at BNL, BNI and BNM)

The auditorium, with a seating capacity of 700, is the main platform where our talented students perform. The state-of-the-art auditorium has proudly staged numerous student performances and also provides a forum where the school community gathers to celebrate various events.

### Foreign Language (available at BNL, BNI and BNM)

In this day of cutting-edge technology where global connections are just a few taps away, students are encouraged to be multilingual to help build an understanding of other cultures. Learning foreign languages help students broaden the horizons of their communication skills and opens new doors for them as aspiring individuals.

BNL offers Mandarin while BNI offers two foreign language options: Arabic and Mandarin. The languages are taught through a meticulously planned curriculum designed and delivered by experts in the respective fields.

BNM offers foreign languages on the basis of parental survey and research. The rationale behind this offering is to awaken students' interest in foreign languages and cross cultures to inculcate in them international-mindedness and help them communicate effectively with the wider world.

### **Holistic Development (available at BNL and BNI)**

As part of our holistic approach to education, we include a mandatory co-curricular programme for students up to and including O level. This programme takes place mostly at the end of the day, four days a week. Its two main components are sports and clubs. Generally, students participate in two sports sessions and two club sessions each week.

### **Inclusive Education (available at BNL and BNM)**

We provide inclusive education that advocates that all students, when possible, should be educated together, regardless of ability. Students with disabilities and/or special needs have the right to receive schooling in regular schools along with their peers. Each special needs student is provided with an Individualised Education Plan (IEP) that encompasses a student's objectives that entail his behavioural issues as well as some academic targets for the term.

### **Laboratories (available at BNL, BNI and BNM)**

Laboratories are well-equipped and have been purpose-built. Physics, Chemistry and Biology laboratories provide students from Class VI and above the opportunity for practical work related to the topics they are studying, making learning hands-on and meaningful. The computer laboratory for students from Class IX and above is frequently used to cover our ICT/IT curriculum. The media laboratory is used by A Level students who have chosen Media Studies as one of their subjects.

### **Nazra (available at BNI and BNM)**

We believe that learning of the Quran and its correct recitation is an important part of our students' wholesome learning. Students are instructed in different aspects of Nazra through planned lessons. Mukhaarij, Hifz of Quranic Duas and Masnoon Duas are parts of the taught curriculum. Nazra being taught at school helps create a holistic learning environment for the students. After completing the Qaida, students learn to recite the Holy Quran correctly, using the rules of tajweed.

### **Stay-Back (available at BNL and BNI)**

Stay-back programme is a facility for teachers and parents. The programme accommodates students of Early Years (Pre-Nursery, Nursery and Kindergarten) from their respective home time till 4:00 pm. The programme is tailored for varied age groups keeping in mind both academic and non-academic activities such as reading sessions, arts and craft, outdoor sports and fun, dance and yoga sessions, movie time and organised free play. The facility includes a separate nap room for children to rest. The main objective of the programme is to make sure that children are comfortable and well settled. Thus, getting the children to participate in activities that help them unwind yet spend their time productively is one of our prime focus.

### **The Early Years (TEY) (available at BNL only)**

The relationships and experiences that children have in the first three years of life have a profound impact on the future as the brain grows 80% during that time. The Early Years is a custom-built facility to meet the needs of growing children while their parents work.

TEY is a premium day care and a child development centre. A facility for parents to entrust their child/children with experienced practitioners and caretakers. TEY accommodates children from 3 months till the time they start school. It provides a closer to home environment, with scheduled routine and age appropriate activities. The facility has specialised learning engagements (theme play, story time, block play, music time, sand & water play, little chef, art and craft, nature, baby yoga and ICT) where children are encouraged to think creatively, develop problem-solving skills, gain self-esteem, and grow into independent learners. At The Early Years, we follow the child's league and ensure a balance between "teacher-guided" and "free-play" activity. We have proper trained staff on board who ensure high quality service, with a nurse on campus to facilitate and help children through the day. Besides an exclusive room that is designated to each programme: a separate nap room, dining area- we have expansive outdoor spaces that provide our young ones

to stretch themselves and play in a safe environment. We believe that it is essential that children's early childhood experience contributes towards building a positive self-image and help them become confident and independent individuals.

### **The Learning Tower (available at BNL and BNM)**

Housing over 10,000 books covering a wide range of topics, The Learning Tower is much more than a traditional library – it is a place where diverse and varied ideas are exchanged, thoughts and viewpoints flourish, where research is fostered. The ICT suite is on the top floor and has computers for research, multimedia projectors as well as dedicated space for robotics. E-Learning Technology integrated into the curriculum is at the heart of teaching and learning at Beaconhouse-Newlands. Each classroom is equipped with a multimedia projector to encourage the use of audio-visual support in the journey of learning. Computers on wheels are made available in classrooms for students to research topics being discussed.

## **Clubs and Societies**

### **Art Club**

Art Club is an opportunity for interested students, from Classes I till XI, to meet after school to work on special art projects and to share art experiences with their peers. Art club is open to all students who are interested in arts; they do not need to be currently enrolled in an art class. The objectives of the Art Club are to provide an opportunity for art students to indulge in art making experience, to share their creative endeavours and ideas with other students and to further pursue their art interests.

### **Culinary Club**

The purpose of the Culinary Club is to provide an environment for students where they can be creative, learn cooking skills, socialise and have fun. Besides making them aware of the nutritional value of various kinds of food, students get an opportunity to improve their mathematical and reading skills. Our students develop their own recipe books, learn

table etiquette and assist a professional chef in the kitchen.

### **Drama and Art Club/Speech Weavers Club**

The Drama and Art Club provides opportunities to students to participate in various theatrical activities including dramas, musicals, plays, etc. Such activities help students develop coordination, concentration and memory, oratory skills and improve their communication and social skills. Students explore their individual talents and gain more confidence through freedom of speech and expression.

### **Environment Club**

The Environment Club plays an important role in creating environmental awareness amongst the future generation. This fosters a greater understanding of the natural and human environment in which our students operate and the impact they have on it. Our students learn to be better conservationists. They develop an organic pathway where they grow vegetables and plants and learn do-it-yourself activities. The in-house bird aviary helps students develop understanding about natural habitat.

### **Fitness First**

Over the past decade, the importance given to fitness has grown manifold. People have become aware of their health, routine and fitness levels. As you know, a healthy body and mind are both needed to lead a healthy life. During 'gym hour', students get to work out and discuss their nutritional plan and exercise routine with our trainer. It is also a great way to end a productive day. The 'fitness first' club is open to all from Classes I to XI.

### **Literary Club**

Books are windows to the worlds of fantasy, drama, knowledge, technology and information. The very feel of a book provides the sense of a friend, comfort and happiness. The club provides books for all age groups, including parents, to read, share and promote a love of reading.

### **Music Club**

Inspired by The Juilliard School for Performing Arts, the



club offers opportunities to learn music. Music enables students to communicate in powerful ways that go beyond their spoken language ability and develop their creative skills, non-verbal expression and aesthetic appreciation. At Beaconhouse-Newlands, the students are able to access individual or group music lessons in guitar, piano, drums and voice. The children are introduced to and taught a variety of musical instruments to explore and learn. In addition, there are opportunities to perform individually and in unison. They learn to sing with accuracy and control focusing awareness on musical elements.

### **Mandarin Club**

Beaconhouse-Newlands is committed to providing quality education services which includes teaching a foreign language; the principal aim of which is to set direction for student and ensure that they are able to develop the knowledge, skills and attributes that they need to be successful, confident, responsible and independent learners in the 21st Century. The curriculum incorporates specifications from globally recognised curricula frameworks enabling the learners to compete with the new fast approaching economic course, with ample opportunities for growth.

In addition to this we have introduced Parents Chinese Language Club to extend the scope of learning. The purpose of this club is to enhance parent's knowledge towards Chinese language skills so that they can relate, communicate and facilitate their child's learning at school. We are focused on preparing them to take HSK test, to have a certified language skill.

### **Robotics Club**

Robotics is the science and technology of robots; their design, manufacture and application. Robotics aids in strengthening a child's spatial visualization skills and further enhancing their innovative and creative abilities. In the robotics club, students have the opportunity to participate and explore, through varied hands-on activities at a beginner level, the design and programming process

of a robot. Students then build 3D structures through magical magnets, LEGO and Bee-Bots. They accomplish certain tasks, which include but are not limited to, line-following, motor parking, avoiding obstacles and solving real world problems.

### **Sports Club**

The Sports Club strives to create an inspirational environment for students to engage in various sports such as swimming, athletics, gymnastics, taekwondo, basketball and martial arts. Sports encourage teamwork and fair play, teaching children valuable lessons of cooperation, respect for others and time management. They learn lifelong lessons about sportsmanship while understanding that it is not always about winning but about participating and giving your best effort.



# Sports at Beaconhouse Newlands

## Our Vision

- Play active
- Start active
- Stay active

Our sports sessions provide students with a great way to finish the school day. These activities are fully inclusive and supervised by professional instructors and trainers who are familiar with issues relating to child safety and development. We offer a wide range of sports and physical activities so students can further improve at their favourite sports and get to know an activity that is new to them.

## Sports Tournaments

Our students participate in various sports events within our school as well as inter-school competitions. They learn the joy of victory but equally how to deal with the disappointment of not winning.

The inclusion of sports and games in a school's routine provides more than just the benefit of physical activity; it empowers children and promotes greater self-esteem. It stimulates, challenges and teaches children how to live in the real world. According to recent research, regular physical activity helps in the retention and understanding of information; it therefore not only promotes better health but also improves academic performance.

## Sports Offered

Beaconhouse-Newlands offers a range of sports for the mental and physical well being of its students and staff members. Parents are equally welcome to benefit from the fully-equipped sports facilities of international standard. The Sports complex provides for the following sports:

## Badminton

Badminton is a racquet sport played using racquets to hit a shuttlecock across a net. It is often played as a casual outdoor activity in a yard or on a beach; whereas formal games are played on a rectangular indoor court. Between the running, lunging, diving and ball hitting, playing badminton burns fat at a fast pace. It builds and tones the quads, gluteus, calves and hamstrings. In addition, your core muscles, arm and back muscles get a workout as well. This game also has social and psychological benefits.

## Basketball

Basketball, invented by Dr James Naismith in 1891, aimed to keep students fit during the long New England winters. The first basketball games were played with a peach basket with no base. It helps increase endurance, improves balance and coordination, develop concentration and self-discipline and build muscle.

## Cricket

Cricket was first recorded in 16th-century England, and it was played in grammar schools, farm communities and everywhere in between. Over the centuries, cricket has become a global passion, played everywhere from Test match arenas to village greens, roadsides and dusty back lots.

As in most sports, there are health benefits to playing cricket. It can improve endurance, stamina, physical fitness and hand eye-coordination. Cricket also involves short bursts of sprinting and throwing which is good for cardiovascular health. Since cricket is very popular in Pakistan, our cricket club has a high volume of students.

## Football

Originally evolved from Cuju, football is a way of encouraging competitiveness, team spirit and keeping a person fit and agile. Separate football grounds have been allocated for primary and senior students.

## Squash

Squash was first played in Harrow school around 1830 when students discovered that a punctured Rackets ball, which “squashed” on impact with the wall, produced a game with a greater variety of shots. It required much more effort on the part of the players who could not simply wait for the ball to bounce back to them as with Rackets. The variant proved popular and was recognised in 1864.

Squash boosts flexibility and sprint speed, improves hand-eye coordination, develops strong and powerful muscles, notably leg and arm muscles, helps with concentration and mental strength, demands focus and patience and enhances a player’s cardiovascular activity.

## Swimming

Swimming is a good all-round activity that keeps the heart rate up but takes some of the impact stress off the body. It builds endurance, helps maintain a healthy weight, healthy heart and lungs, tones muscles and builds strength. Regular swimming classes are part of a weekly timetable. Safety at the swimming pool is of great concern to the management, for which our professionally trained coaches and life-guards are always available.

A half Olympic sized indoor swimming pool of international standards has been provided for students aged 10 and above. There is a separate mini-swimming pool catering to the needs and safety of our younger students.

## Table Tennis

Table tennis started as a genteel, after-dinner game, but is now a fast, high-tech sport. Also known as ping pong, it involves two or four players hitting a lightweight ball back and forth across a table using a small paddle. The game takes place on a hard table divided by a net. Playing table tennis improves hand-eye coordination, stimulates mental alertness, concentration and increases tactical strategy.

## Volleyball

Volleyball, initially known as Mintonette, is a low-contact indoor sport that originated in 1895. It was renamed volleyball due to the volleying nature of the game.

Volleyball involves specific technical and physical skills including serving, passing, setting, jumping, reacting, changing pace and direction, blocking, attacking and digging. The game helps improve agility, overall flexibility, reaction time, speed and upper and lower body strength.

## Gymnasium

The school has its own gymnasium, which is open during school hours. During co-curricular times (2:00 pm-3:00 pm), students make use of our sports grounds, gymnasium and pool under the guidance of various sports coaches.







# Health and Care

Our schools place the utmost importance on students' physical and psychological welfare. This can only be achieved with parental support and cooperation. In this regard, parents must ensure that their children are properly vaccinated and, if they are required to observe a quarantine period due to any reason, notify the school accordingly. To prevent other children from falling ill, parents should ensure that their child returns to school only after they are fully recovered.

Schools have basic first-aid facilities. In the event of an emergency, the child is taken to the nearest hospital and every effort is made to inform the parents/guardians of the child immediately. The school, however, does not accept any responsibility or liability for providing such care.

## **Sick Bay**

The sick bay is available for students in case any medical aid is required. A qualified nurse is available for this purpose. Any emergency is reported to the respective section head so that immediate action may be taken, which might include taking the student to the nearest hospital.

## **Child Protection Policy Statement**

The Beaconhouse School System is committed to providing a safe and secure environment for all students enrolled at our schools. As a responsible organisation we actively seek to promote the welfare of all students in our charge and ensure that they are protected from harm. We believe that every member of the organisation has a role to play and endeavours to provide an environment where all members of the school community i.e. students, parents, teachers, administrators and support staff are confident in sharing concerns either about their own safety or the safety and well being of others. This Policy has been developed in accordance with the principles established by the 'Child Protection System Bill, 2014' passed by the Pakistan National Assembly.

Our Child Protection Policy outlines:

- clearly defined requirements to keep children safe
- clear ways of identifying concerns
- appropriate procedures if a concern should arise
- guidelines for reporting and recording concerns
- screening and recruitment guidelines for visitors and new staff members
- safe working practices and acceptable staff behaviour
- provision of Child Protection training for all adults working with children

**Child Protection Committees are based at each level of the system, so that we are able to follow up on any queries or concerns students, teachers and parents may have in regard to child safety in our schools.**

If you or your child require further information, please contact your School Head or Parent Relation Officer in your school.

# Campus Locations

## **Beaconhouse-Newlands Lahore**

Plot # 632/1, Block J, DHA Phase VI, Lahore.

UAN: +92 (42) 111 111 020

Landline: +92 (42) 371180574-78

 /beaconhousenewlands.lhr

## **Beaconhouse-Newlands Islamabad**

Hill View Rd. Mohra Noor, Banigala, Islamabad.

UAN: +92 (51) 111 111 020

Mobile: +92 300 8434028

Landline: +92 (51) 2613935-39

 /bssnewlandsisb


## **Beaconhouse-Newlands Multan**

4-Officers Colony, Khanewal Road, Multan.

UAN: +92 (61) 111 111 020

Mobile: +92 300 6857979


Landline: +92 (61) 6224456-58

 /BeaconhouseNewlands.MTN

## **Beaconhouse-Newlands Kuala Lumpur**

Lot No. 2854, Batu 9, 43200 Cheras, Selangor Darul Ehsan, Malaysia.

Landline: +603 9082 4579

 /BeaconhouseNewlandsCheras

### Disclaimer:

This work/product/service has been developed independently from and is not endorsed by the International Baccalaureate Organization. International Baccalaureate, Baccalauréat International, Bachillerato Internacional and IB are registered trademarks owned by the International Baccalaureate Organization.

